

**SMS Recital Series  
Hilary Term 2014**

**Week 1, Friday 24<sup>th</sup> January, 1:15pm, Somerville Chapel**

Miyuki Kato (piano)

Works by Bach, Chopin, Balakirev and Beethoven

**Week 2, Friday 31<sup>st</sup> January, 1:15pm, Somerville Chapel**

Luke Faulkner (piano)

Works by Rachmaninov, Schumann/Liszt, Beethoven and Chopin

**Week 3, Friday 7<sup>th</sup> February, 1:15pm, Somerville Chapel**

Jonathan Stamp (organ)

Works by Buxtehude, Frescobaldi, Boëllmann, Sweelinck and Vienne

**Week 4, Thursday 13<sup>th</sup> November, 8pm, Somerville Chapel**

Margaret Irene Seymour Award Holders' Recital

**Week 4, Friday 14<sup>th</sup> February, 1:15pm, Somerville Chapel**

Oxford Guitar Ensemble

Works by Vivaldi, Bizet and Poulenc

**Week 5, Friday 21<sup>st</sup> February, 1:15pm, Somerville Chapel**

Tom Hammond-Davies (countertenor), Giles Masters (guitar)

**Week 6, Wednesday 26<sup>th</sup> February, 8pm, Somerville Chapel**

Choral Scholars' Recital

Emily Winkler (soprano), Joanna Perkins (soprano/piano), Ruth Akinradewo (soprano), Alexandra Worrell (soprano), Isabel Sinagola (mezzo-soprano), Katie Jeffries-Harris (mezzo-soprano), Christoph Schnedermann (bass), Sam Walker (tenor), Ian Buchanan (tenor), James Aldred (tenor), Robert Pecksmith (piano)

**Week 6, Friday 28<sup>th</sup> February, 1:15pm, Somerville Chapel**

Simon Grange (bass)

**Week 7, Friday 7<sup>th</sup> March, 1:15pm, Somerville Chapel**

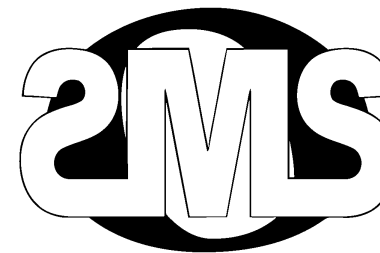
Performer tbc

**Week 8, Friday 14<sup>th</sup> March, 1:15pm, Somerville Chapel**

Olivia Alice Martin (soprano)

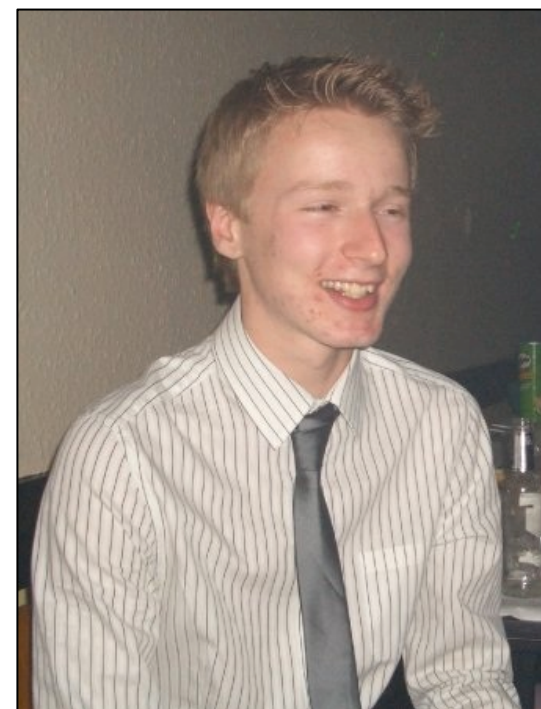
Admission is free. There will be a retiring collection in aid of Somerville Choir's US tour.

**SMS Recitals Coordinator: Stefan Schwarz**



**Somerville Music Society**

**Lunchtime Recital, 7 February 2014**



**Jonathan Stamp, organ**

---

**[www.somervillemusicsociety.com](http://www.somervillemusicsociety.com)**

**Dieterich Buxtehude (1637-1707)**

Praeludium in G minor  
*BuxWV 149*

**Girolamo Frescobaldi (1583-1643)**

Toccata Terza (Book I)

**Léon Boëllmann (1862-1897)**

Prière à Notre Dame  
(from *Suite gothique*, op. 25)

**Jan Pieterszoon Sweelinck (1562-1621)**

Ballo del Granduca  
*SwWV 319*

**Louis Vierne (1870-1937)**

Carillon de Westminster

**Jonathan Stamp, organ**

Originally from Nottingham, Jonathan Stamp started to learn the organ in 2007 with Timothy Uglow at Worksop College. After this, he was offered a scholarship to study organ with Henry Fairs at Birmingham Conservatoire and is currently in his fourth year. He also holds the organ scholar's post at St Philip's Cathedral, Birmingham where he accompanies weekly services and assists with the training of the choirs.

He is also the accompanist to the Wolverhampton Civic Choir and recently accompanied the Birmingham Conservatoire Chamber Choir in a recording of lesser-known Howells works.

Jonathan has also performed as a soloist in St Michael and All Angels, Croydon, and St Chad's and Chelmsford Cathedrals. He is the organ scholar elect of Norwich Cathedral.

**For future local and national concerts, see [www.organrecitals.com](http://www.organrecitals.com).**

**Somerville College Chapel Organ**

Harrison & Harrison (Durham), 1937

**Specification**

<b>Great</b>		<b>Swell</b>	
Contra Dulciana	16	Violin Diapason	8
Open Diapason	8	Lieblich Gedeckt	8
Claribel Flute	8	Echo Salicional	8
Rohr Flute	8	Vox Angelica (TC)	8
Octave	4	Harmonic Flute	4
Super Octave	2	Cornopean	8
<b>Pedal</b>			
Sub Bass	16		
Dulciana	16		
Flute	8		

Accessories:

3 pistons to each manual, Gt-Pd piston, balanced crescendo pedal